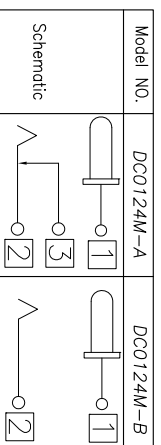
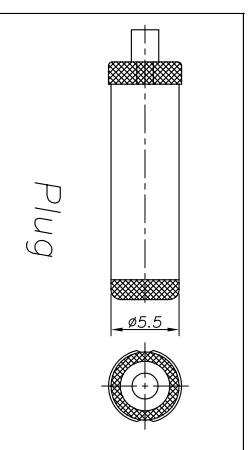
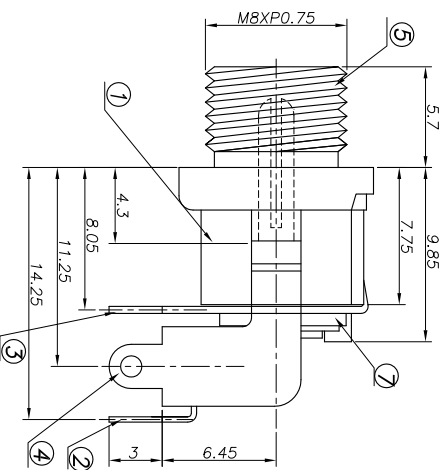
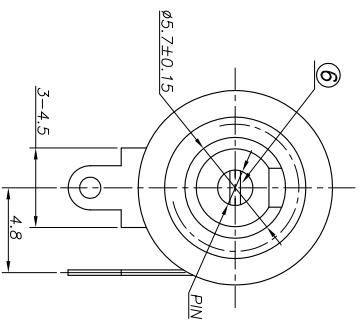


P.C.B Layout  
(Printed-sided view)



□: TERMINAL NO.

Ordering information:  
 DC0124M-□ □  
 (1): Series No (2) (3)  
 (1): Series No  
 (2): Schematic option: A B  
 (3): Center pin diameter:  
 H: 2.0 J: 2.5

**SPECIFICATION**

1. Rating : 30V 3.0A;
2. Contact resistance:  $\leq 30m\Omega$ ;
3. Insulation resistance:  $\geq 100M\Omega$  (DC250V);
4. Withstand voltage: 500VAC ;
5. Insertion and extraction force: 3-30N;
6. Life test: 5,000 cycles.

REV. LTR.	DESCRIPTION	SIGN	DATE

⑧ Nut	1	Brass	Ni-Plating
⑦ Washer	2	Bakelite	
⑥ Center pin	1	Phosphor bronze	Ni-Plating
⑤ Bushing	1	Copper alloy	Ni-Plating
④ Snunt Terminal	1	Phosphor bronze	Cu-Sn-Plating
③ Tip Spring	1	Brass	Cu-Sn-Plating
② Center pin terminal	1	Brass	Cu-Sn-Plating
① Housing	1	PBT	Black

UNIT:MM	TYPE:	MODEL NO.:	PAPER NO.:	SCALE	PAGE 1 OF 1
	DC POWER JACK	DC0124M-__	A4	FULL	2

DESIGNER BY:	Zhuhong	2009/07/08	丞永實業有限公司 BLUE SOURCES ELECTRONICS CO.,LTD.
CHECK BY:			
APPROVED BY:			